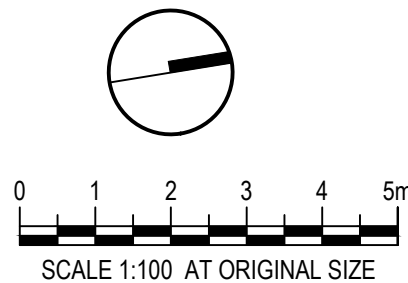


NOT FOR CONSTRUCTION

2	RE-VISED DEVELOPMENT APPLICATION	AZ	RI	RI	21.02.24
1	DEVELOPMENT APPLICATION	AZ	RI	RI	08.09.23
No	Revision	Note: * indicates signatures on original issue of drawing or last revision of drawing	Drawn	Job Manager	Project Director



CLIENT

FinV

ARCHITECT



LANDSCAPE

LAND
AND
FORM

DO NOT SCALE

Conditions of Use.
This document may only be used by the client (and any other person who the client has agreed can use this document) for the purpose for which it was prepared and must not be used by any other person or for any other purpose.

Drawn	RI	Designer	CR/ RI
Drafting	CR	Design	CR
Check		Check	
Approved			
(Project Director)			
Date			
Scale	1:100		

This Drawing must not be used for Construction unless signed as Approved

Client	
Project	5 BELMORE ST, BURWOOD
Title	LEVEL 4 COMMUNAL ROOFTOP
Original Size	
A1	Drawing No: LD-DA110
Rev: 2	

Design Objectives

A Safe and Connected Community

A welcoming neighbourhood that creates a sense of belonging and security whilst being connected to the wider local community of quality schools and local lifestyle amenity. The proposal expands on the sites existing assets and creates a new community destination. We aim to create resilient communities with shared spaces & encourage community support & engagement



Sustainability & Innovation

We aim to create resilient spaces harnessing innovation and a commitment to a sustainable community for all. The proposal aims to increase Urban canopy & City greening improve Green infrastructure - with a minimum 30% site canopy coverage through implementation of trees & 'green' canopy structures to mitigate heat island effect. WSUD principles are also explored through blistered kerb WSUD planting



Harmony With Nature

Biophilic design principles influence the urban design to balance built form with natural landscape. Supported by generous open spaces vegetated corridors and selective tree-planting to enhance the beauty of the site. We aim to create a Green Heart to the development with an emphasis on tree Canopy , natural materials and sustainability.



A Healthy Lifestyle

A site designed for a healthy, positive lifestyle with public spaces, active linkages, sporting facilities and nearby access to township amenities and transport. We aim to enhance the existing site with connections to existing reserves and the wider context



Design Principles & Key Moves

Embedding the built-form in a strong **landscaped setting**

Maximising green amenity through lower ground pockets, awnings & terraces & rooftop landscaping

Creating a **fine-grain** & connected **community**

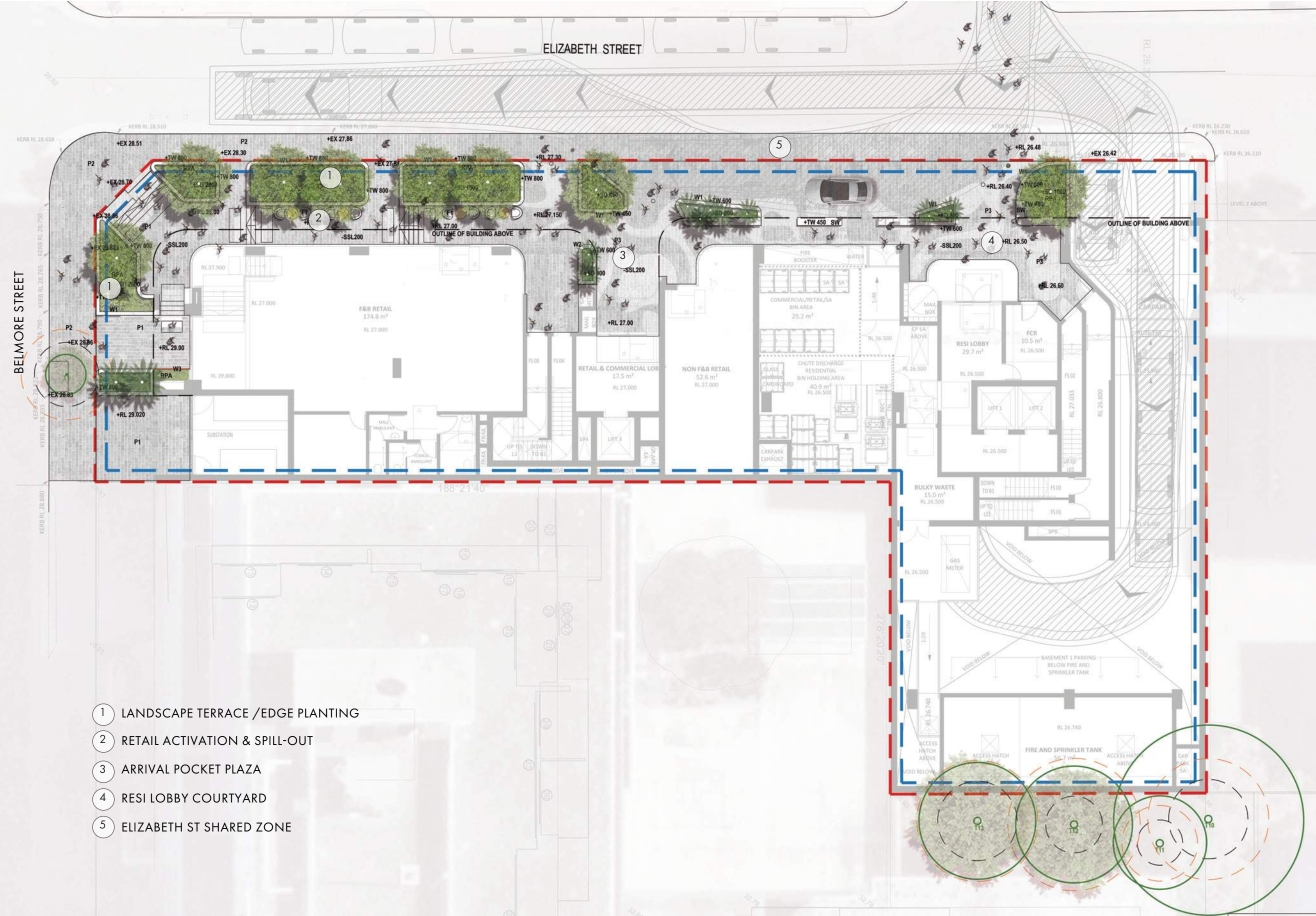
Creating small and special moments for residents to connect as neighbours in a boutique environment

Promoting a personal **connection with nature** and improving mental health & well-being

Promoting visual connections to nature at all times to allow nurturing and healing through landscape and provide residents with their own high quality garden experience

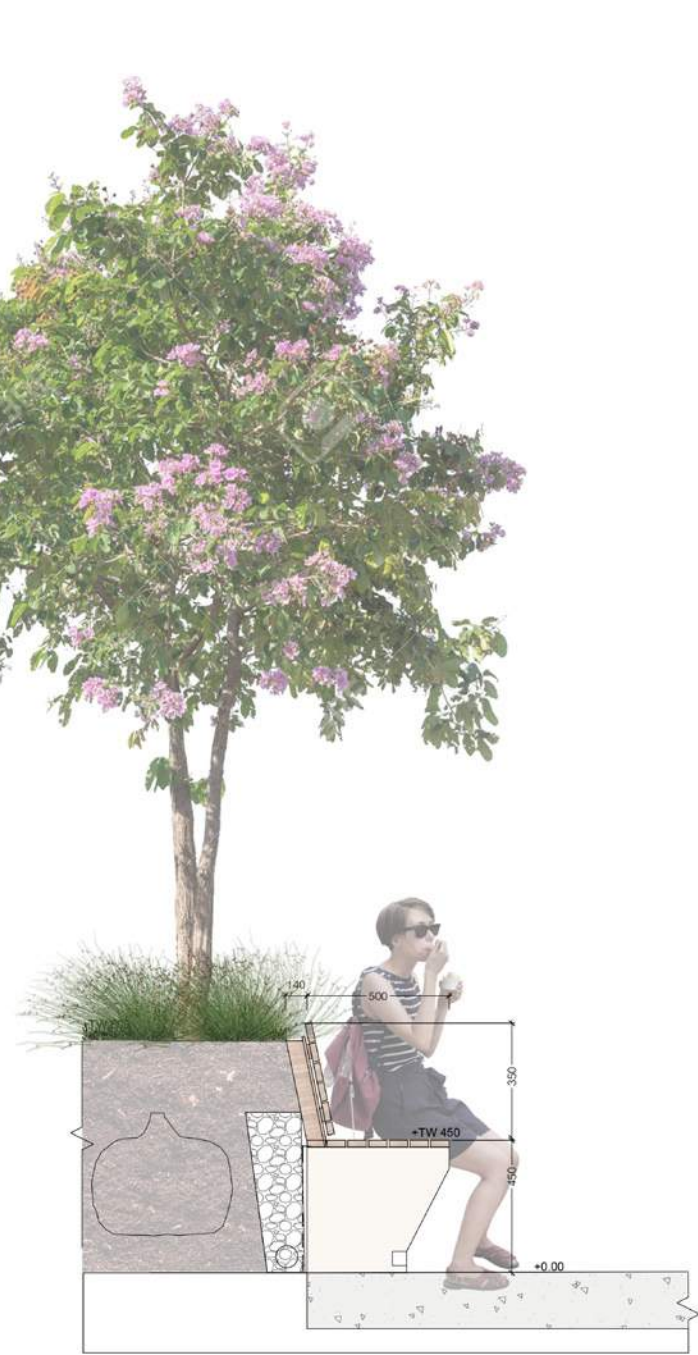


Public Domain Plan



Public Domain Character

STREETSCAPES / PUBLIC DOMAIN



STREET PLANTER / SEAT TYPICAL DETAIL

FEATURE MOMENTS / GATHERING SPACES

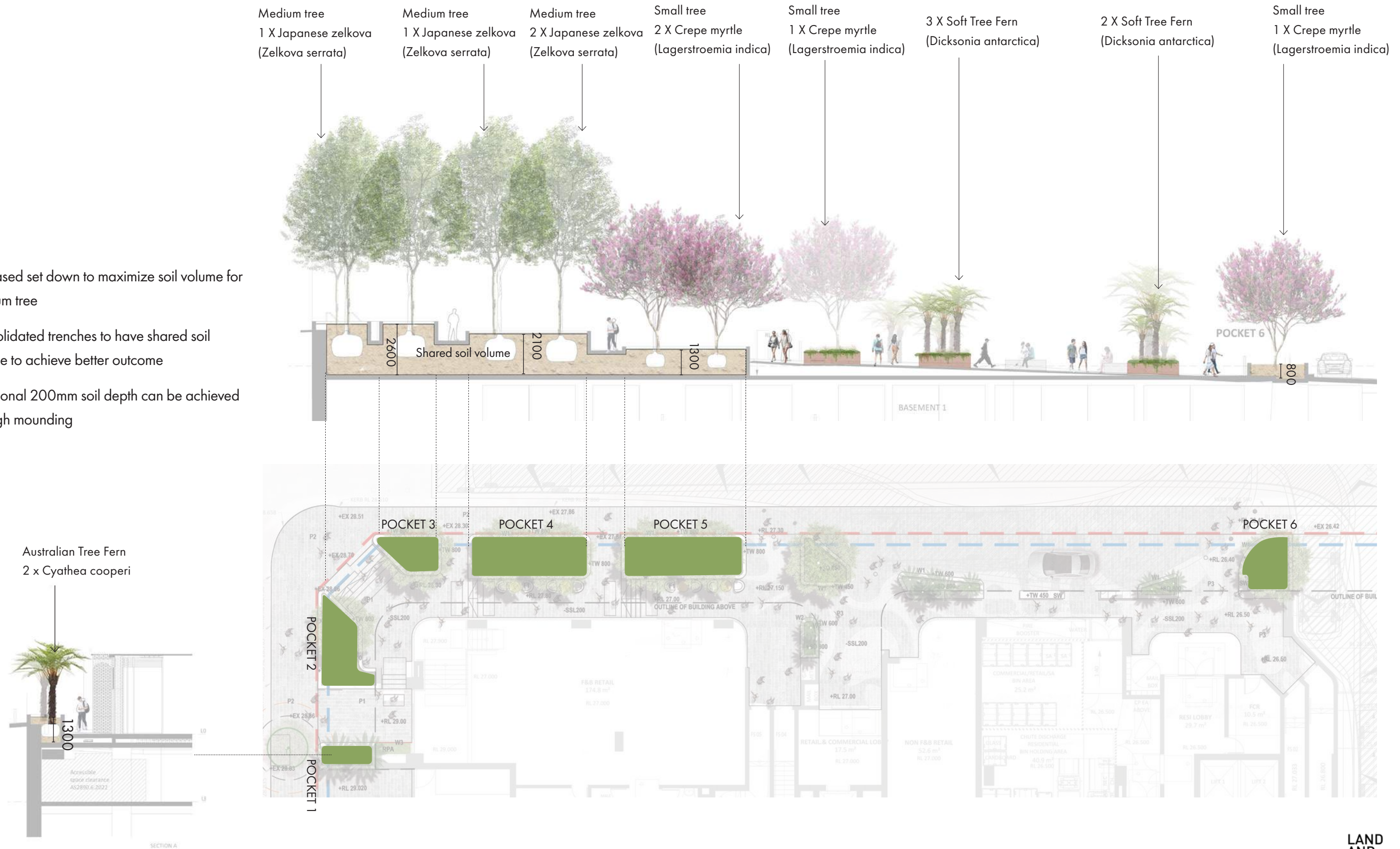


SHARED ZONE



Street Trees & Soil Depth

- Increased set down to maximize soil volume for medium tree
- Consolidated trenches to have shared soil volume to achieve better outcome
- Additional 200mm soil depth can be achieved through mounding



[illegible]

Communal Rooftop Character



Planting Palette



Zelkova serrata



Archontophoenix alexandrae



Elaeocarpus reticulatus



Hymenosporum flavum



Lagerstroemia indica



Cyathea cooperi

MIX TYPE 1 - FULL SUN/PART SHSADE



Acmena smithii



Banksia spinulosa



Lomandra tanika

MIX TYPE 2 - PART SHADE/SHADE TOLERANT



Alpinia caerulea



Gardenia jasminoides



Rhapis excelsa



Dianella caerulea



Doryanthes excelsa



Hibbertia scandens



Clivia miniata

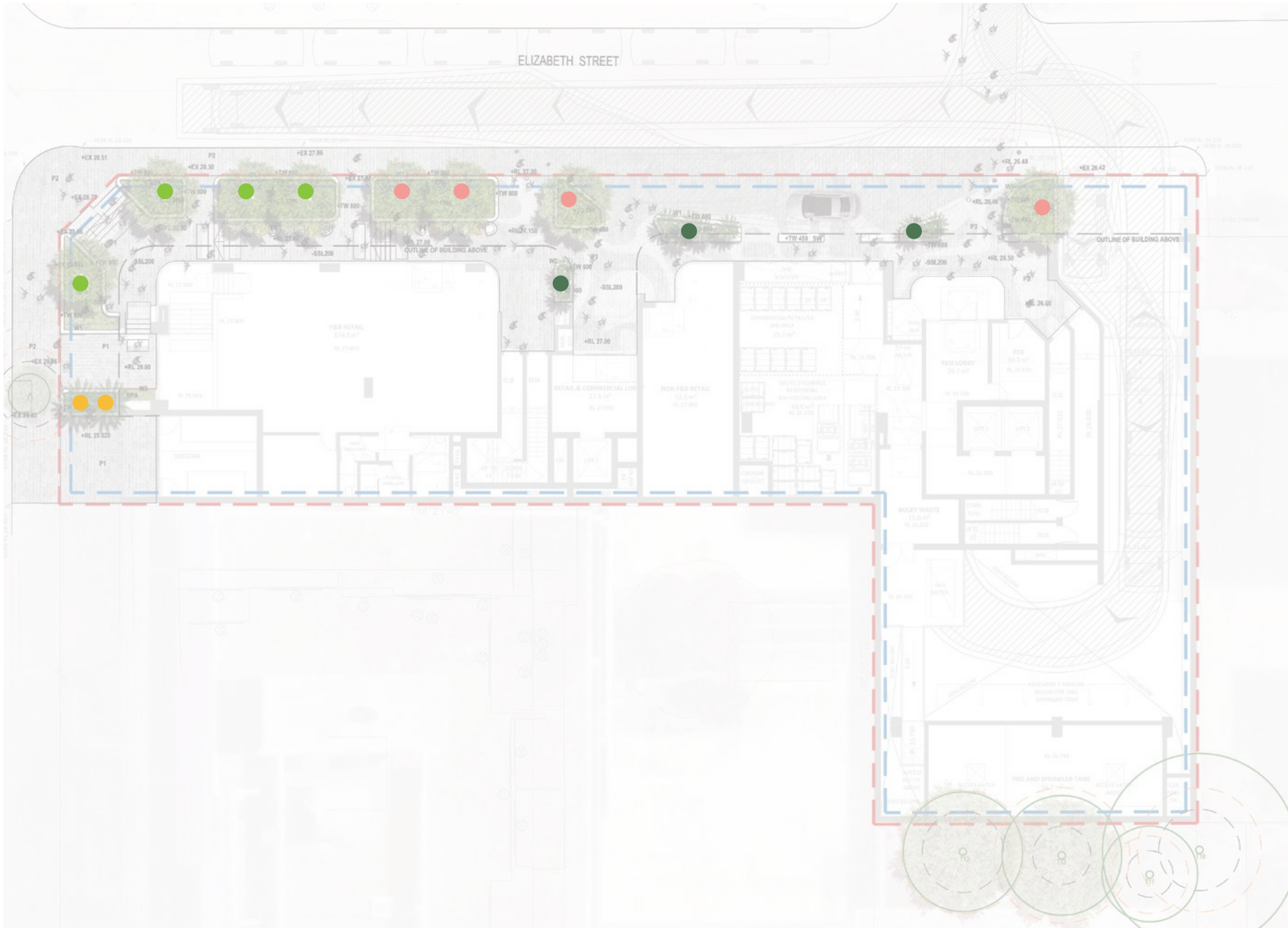


Lomandra longifolia LM400



Alternanthera denata

Tree Planting Strategy - Ground & Public Domain



TREES



Japanese zelkova
(Zelkova serrata)



Crepe myrtle
(Lagerstroemia indica)



Soft Tree Fern
Dicksonia antarctica



Australian Tree Fern
Cyathea cooperi

Tree Planting Strategy - Level 4



TREES



Native Frangipani
(Hymenosporum flavum)



Crepe myrtle
(Lagerstroemia indica)



Alexandra palm
(Archontophoenix alexandrae)



Blueberry ash
(Elaeocarpus reticulatus)

Materials Palette



W1: White/grey brick wall to match Architecture facade finishes



W2: Brown brick wall to match Architecture facade finishes



W3: Raised steel planter



SW: Insitu concrete class 2 with timber seating battens and led light strip



P1: Granite paving



P2: Paving to Council Standards



P3: Feature stone paving



P4: Pavers on pedestals



TD: Timber Decking



TU: Natural Turf



F1: Cafe table

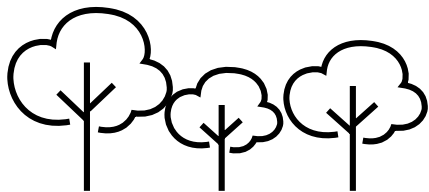


F2: Umbrella with bespoke seating



F3: Outdoor dining table

Project Aims/Target Outcomes



INCREASED TREE CANOPY

The retention of key existing trees and the provision of new public domain spaces will enable the site to increase it's current tree canopy coverage to 15% to further mitigate Urban Heat Island effect and create comfortable spaces around homes and within the public domain.



PROMOTING BIOPHILIC DESIGN

The proposal will promote biophilic design by creating extensive street tree canopy & rooftop gardens to contribute to local flora and fauna systems



IMPROVED PUBLIC DOMAIN

The site provides a number of public domain spaces , which enrich both leisure and recreational opportunity across the site.



A CATALYST FOR HEALTHY LIVING

The project will activate the precinct and become a catalyst for the area with outdoor fitness and well-being spaces for people of all abilities and ages



*Note figures indicative only and are subject to design development.